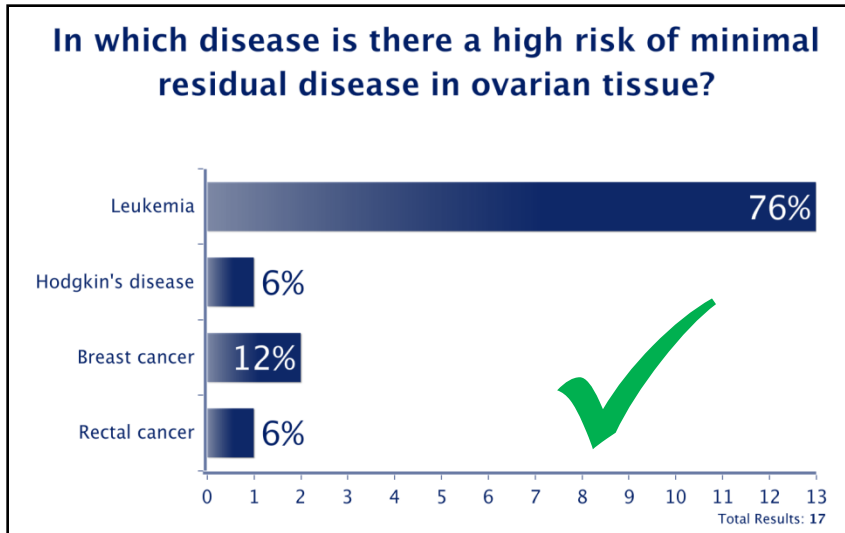
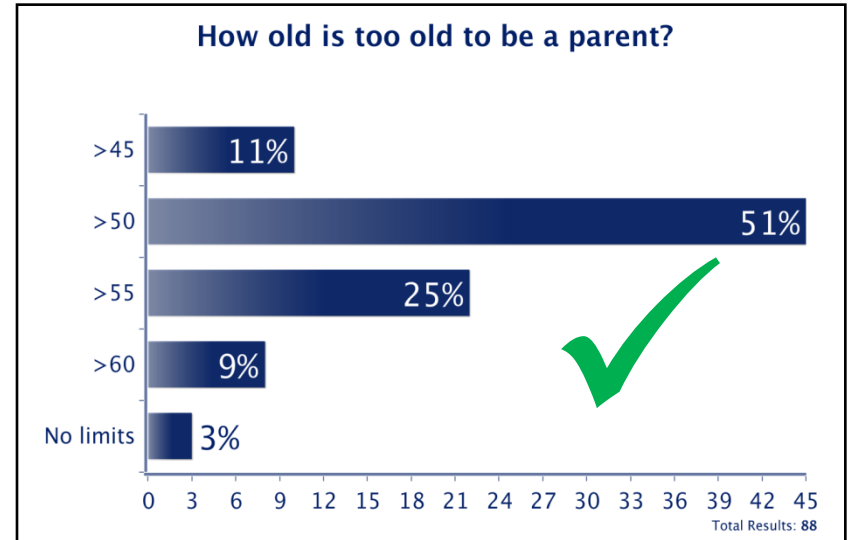


# ✓ DO USE these types of ARS Questions/Answers

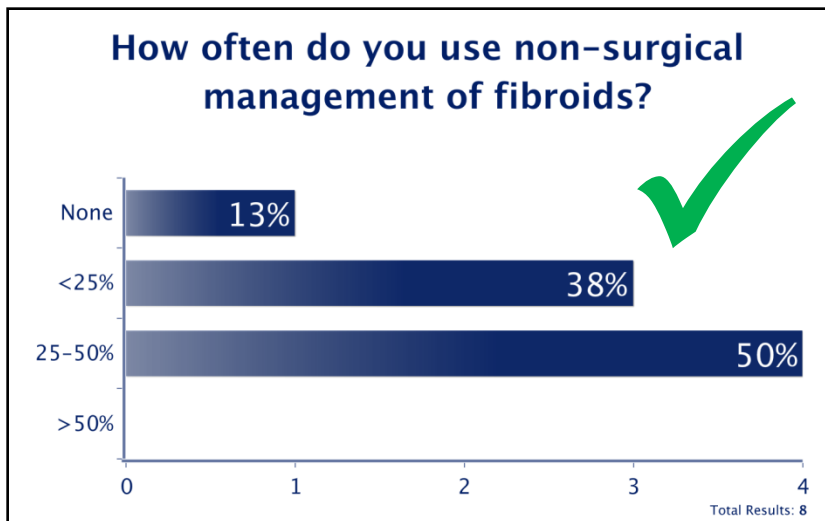
## ▶ Learner Knowledge (could use as pre/post)



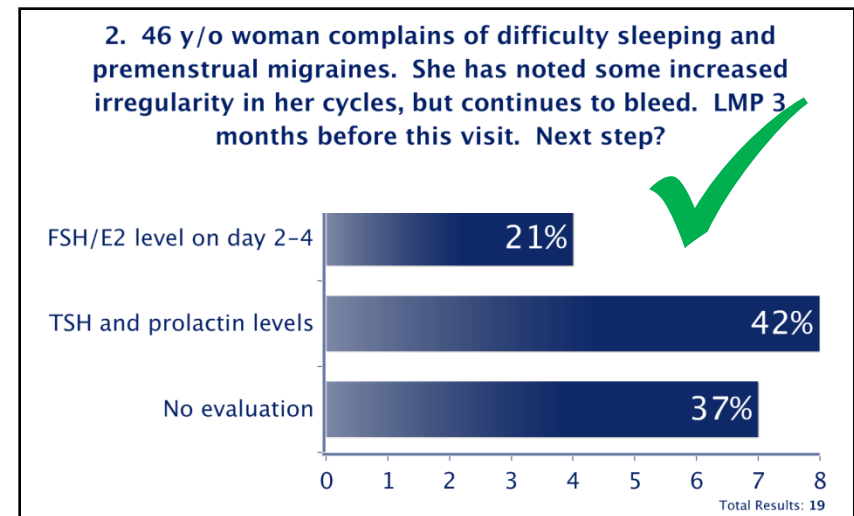
## ▶ Controversial/Opinion



## ▶ Practice Patterns

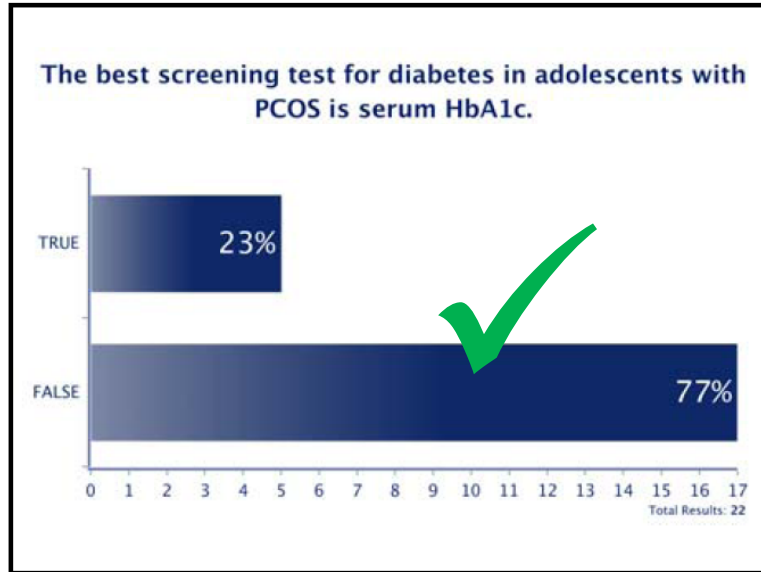


## ▶ Case Study/Next Step

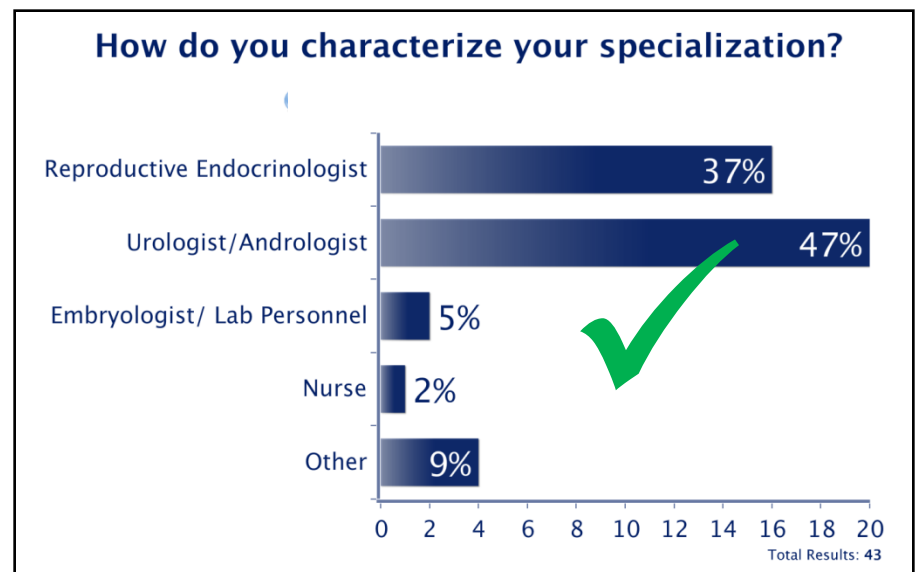


# ✓ DO USE these types of ARS Questions/Answers

## ▶ TRUE/FALSE

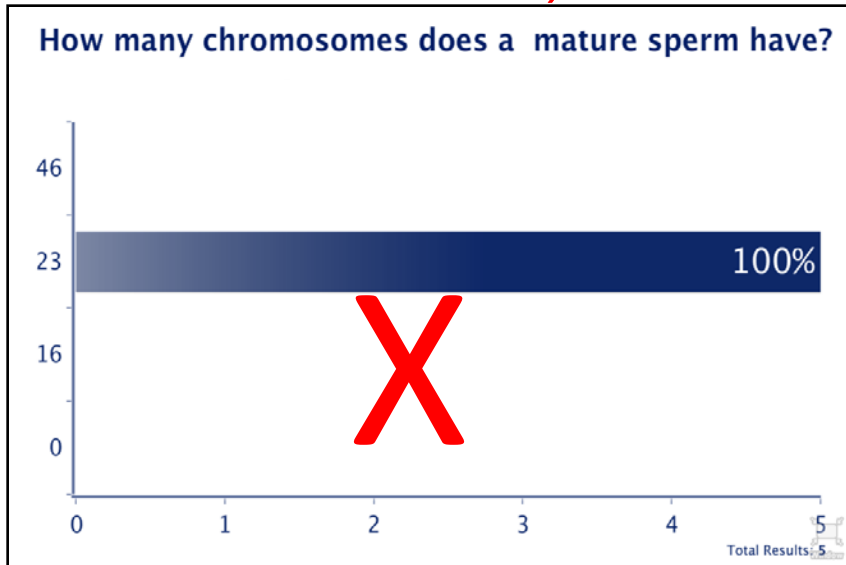


## ▶ Audience Demographics

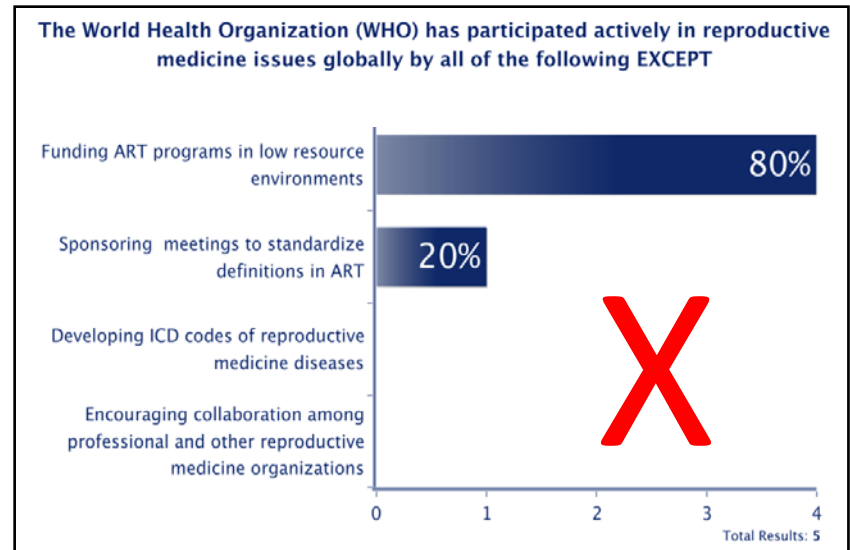


# DO NOT USE THESE TYPES of ARS Questions/Answers

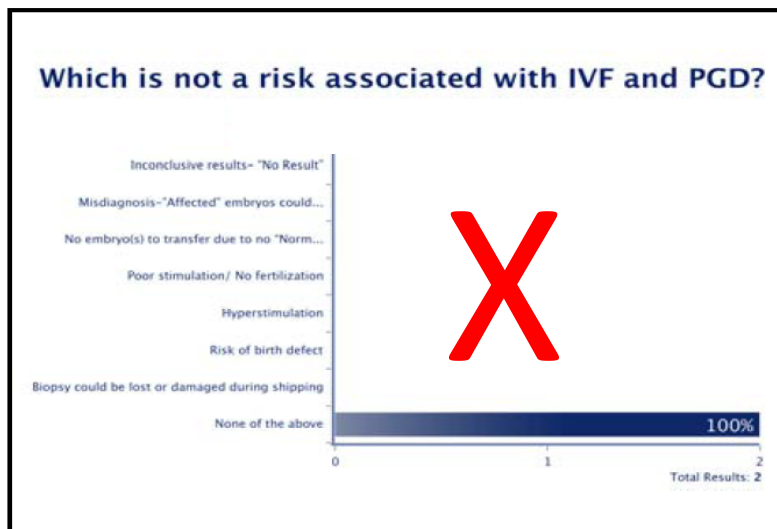
▶ *Too Basic – the audience already knew the answer*



▶ *Question is too complicated*



▶ *Too many answer choices/ negative question*



▶ *Answers are too long*

